



# Open-source bydlí na Praze 10

ÚŘAD MČ PRAHA 10

Jan Vojtěch Binder – CIO MČ P10  
Tým IT Praha 10

# Původní situace

- HW IBM, Fortinet, ...
- SW VMware, IBM, Fortinet
  
- ale i ...
  - DEBIAN, PostgreSQL, Apache, TomCat, MediaWiki

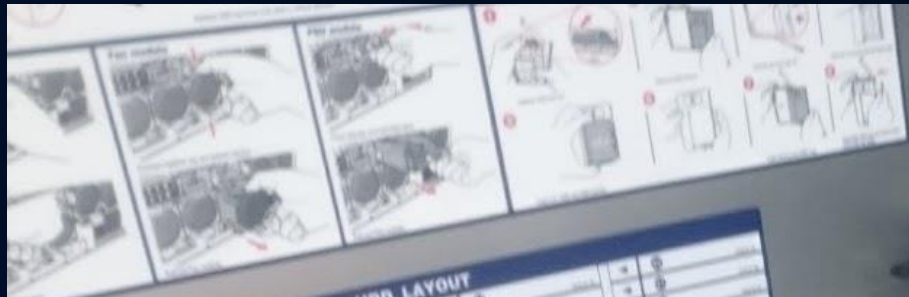
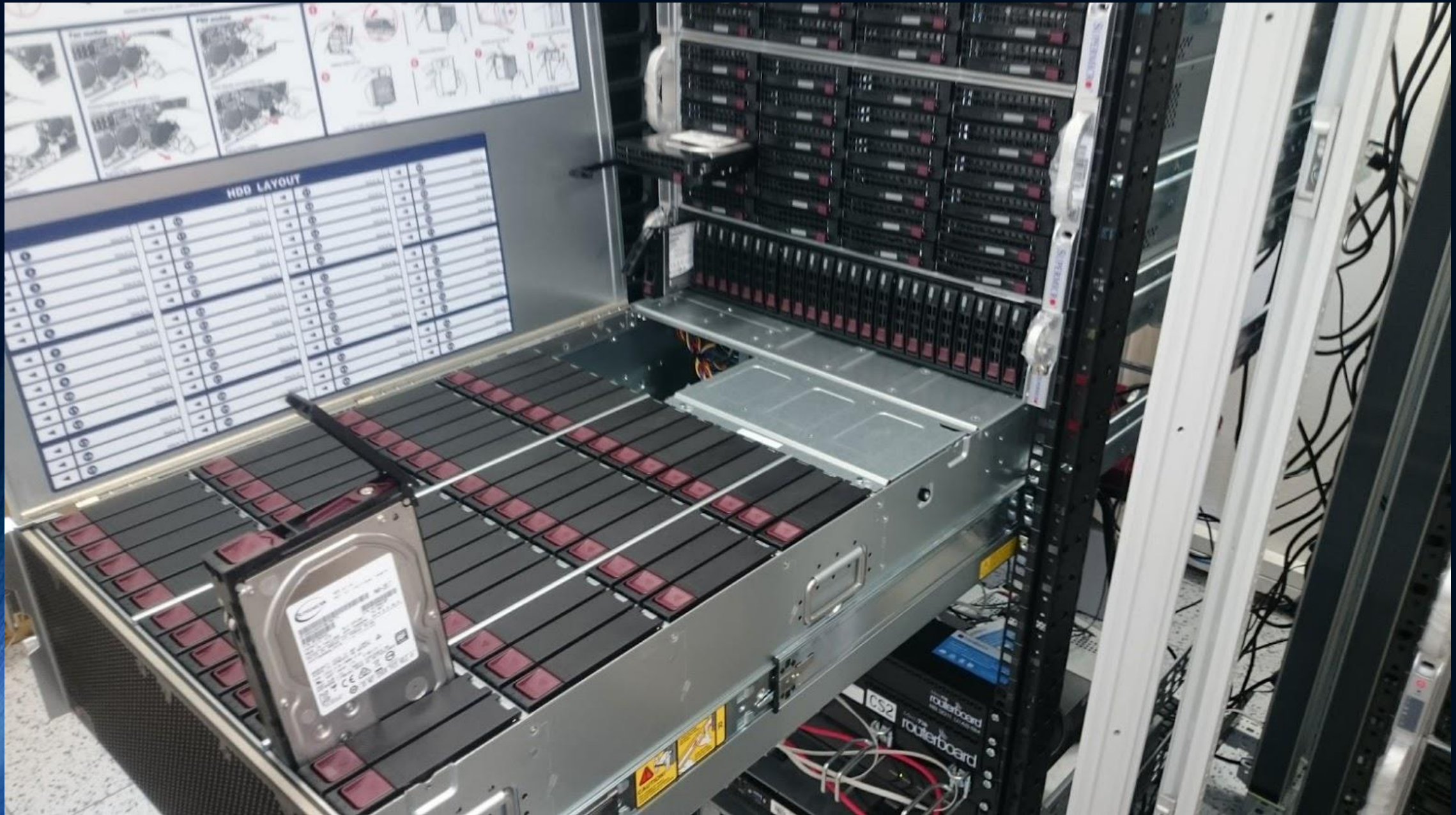
# S open-source

- HW standardní Intel
- SW DEBIAN, KVM, Icinga, DokuWiki

# Změna v číslech – disková úložiště

- Původní zadání
  - IBM pole - hrubá kapacita 30TB
  - Technologie FiberChannel, SAS, HW RAID
  - Rozpočet 4.900.000,-Kč s DPH
- Nové zadání a realizace
  - Standardní komponenty vysoutěženo dle zákona o VZ
  - Technologie IP (iSCSI)
  - 2x pole 9,6TB SSD + 180TB HDD, 512GB RAM, 2xCPU, 8x10Gbps port
  - 1x pole 288TB HDD, 128GB RAM, 6x10Gbps port
  - 2x SAN switch
  - Cena 3.042.000,-Kč s DPH





HDD LAYOUT			
Bay	Drive Type	Orientation	Notes
1	3.5"	Vertical	
2	3.5"	Vertical	
3	3.5"	Vertical	
4	3.5"	Vertical	
5	3.5"	Vertical	
6	3.5"	Vertical	
7	3.5"	Vertical	
8	3.5"	Vertical	
9	3.5"	Vertical	
10	3.5"	Vertical	
11	3.5"	Vertical	
12	3.5"	Vertical	
13	3.5"	Vertical	
14	3.5"	Vertical	
15	3.5"	Vertical	
16	3.5"	Vertical	
17	3.5"	Vertical	
18	3.5"	Vertical	
19	3.5"	Vertical	
20	3.5"	Vertical	
21	3.5"	Vertical	
22	3.5"	Vertical	
23	3.5"	Vertical	
24	3.5"	Vertical	
25	3.5"	Vertical	
26	3.5"	Vertical	
27	3.5"	Vertical	
28	3.5"	Vertical	
29	3.5"	Vertical	
30	3.5"	Vertical	
31	3.5"	Vertical	
32	3.5"	Vertical	
33	3.5"	Vertical	
34	3.5"	Vertical	
35	3.5"	Vertical	
36	3.5"	Vertical	
37	3.5"	Vertical	
38	3.5"	Vertical	
39	3.5"	Vertical	
40	3.5"	Vertical	
41	3.5"	Vertical	
42	3.5"	Vertical	
43	3.5"	Vertical	
44	3.5"	Vertical	
45	3.5"	Vertical	
46	3.5"	Vertical	
47	3.5"	Vertical	
48	3.5"	Vertical	
49	3.5"	Vertical	
50	3.5"	Vertical	
51	3.5"	Vertical	
52	3.5"	Vertical	
53	3.5"	Vertical	
54	3.5"	Vertical	
55	3.5"	Vertical	
56	3.5"	Vertical	
57	3.5"	Vertical	
58	3.5"	Vertical	
59	3.5"	Vertical	
60	3.5"	Vertical	
61	3.5"	Vertical	
62	3.5"	Vertical	
63	3.5"	Vertical	
64	3.5"	Vertical	
65	3.5"	Vertical	
66	3.5"	Vertical	
67	3.5"	Vertical	
68	3.5"	Vertical	
69	3.5"	Vertical	
70	3.5"	Vertical	
71	3.5"	Vertical	
72	3.5"	Vertical	
73	3.5"	Vertical	
74	3.5"	Vertical	
75	3.5"	Vertical	
76	3.5"	Vertical	
77	3.5"	Vertical	
78	3.5"	Vertical	
79	3.5"	Vertical	
80	3.5"	Vertical	
81	3.5"	Vertical	
82	3.5"	Vertical	
83	3.5"	Vertical	
84	3.5"	Vertical	
85	3.5"	Vertical	
86	3.5"	Vertical	
87	3.5"	Vertical	
88	3.5"	Vertical	
89	3.5"	Vertical	
90	3.5"	Vertical	
91	3.5"	Vertical	
92	3.5"	Vertical	
93	3.5"	Vertical	
94	3.5"	Vertical	
95	3.5"	Vertical	
96	3.5"	Vertical	
97	3.5"	Vertical	
98	3.5"	Vertical	
99	3.5"	Vertical	
100	3.5"	Vertical	

CS2  
routerboard  
routerboard

Warning labels and technical specifications are visible on the front of the drive tray.

